



LightVista aims to provide high quality lighting design services to its clients, with emphasis on aesthetics, utility, energy efficiency and cost efficiency. Lighting design is art as well as engineering, and we understand this completely.



Founder Profile

LightVista was founded by Ms.Suma Khandige, a lighting design consultant with 6+ years of extensive hands-on experience in lighting design.

Ms.Suma received her BE in Electrical Engineering with specialization in illumination technology, from the prestigious Manipal Institute of Technology, Manipal.

Her experience includes work at a lighting consultancy firm with manufacturing capabilities, which gave her valuable exposure to the manufacturing and technicalities of luminaires. She spent three years of her career as the in-house lighting designer for the Bangalore centre of a reputed Singapore based architectural design and service consultancy firm.

She is an expert in lighting design for corporate interiors and also has experience in designing lighting for streets, landscapes, crèches, hospitals, cafeterias, industries and places of worship.

She has two LEED Platinum certified projects, each of 2.5 lakh sft, and two LEED Gold certified projects to her credit.



Design Process

The design process for a typical project would involve the following stages. It may however vary, to accommodate specific requirements of each project.

Schematic Design Stage:


1. Briefing with the client, architect and interior designer to discuss specific requirements if any.
2. Indication on lighting budget and project timeline.
3. Collect all the drawings and relevant details.
4. Carry out conceptual design studies.
5. Submit lighting concept supported by drawings, lighting calculations / isoline diagrams and details of proposed luminaires to convey the intent of lighting design.
6. Design discussions/conferences with relevant designers and consultants.

Detailed Design Stage:

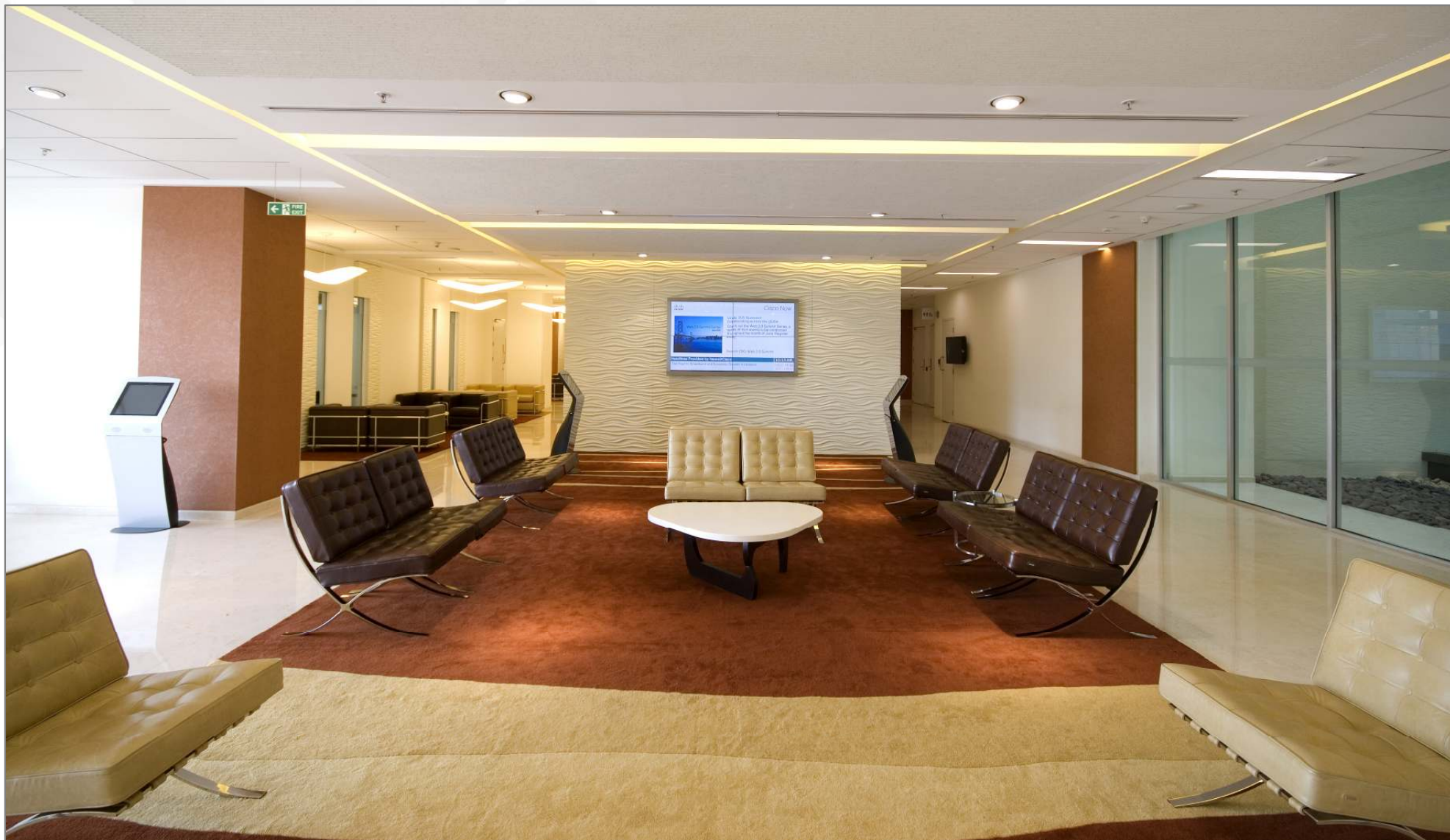
1. Preparation of final lighting layout(s) after approval of the proposed lighting concept.
2. Assist the project team / PMC for arranging samples of non-standard or custom-built products for approval.
3. Final submission, that would include:
 - 3.1 Lighting layout(s)
 - 3.2 Luminaire and lamp specification
 - 3.3 Bill of Quantity
 - 3.4 Contact details for procurement of proposed luminaires
 - 3.5 3D view, if required, as per general terms
4. Review of samples along with project team, before procurement by contractor, in case alternates/equivalents of specified luminaires are offered.

List of recent projects designed by founder:

- Cisco campus at Cessna Business Park, Bangalore (B1, B2, B3 & B4)
- Cisco at Vrindavan Tech Village, Bangalore
- Target Corporation at Embassy Manyata Tech Park, Bangalore
- Target Corporation office at Delhi
- Microsoft campus B 3, Hyderabad
- ANZ at Embassy Manyata Tech Park, Bangalore
- Novell, Bangalore
- Nokia Siemens Networks at Embassy Manyata Tech Park, Bangalore
- GE campus Ph V, Bangalore



Picture gallery
(Earlier projects by the founder)





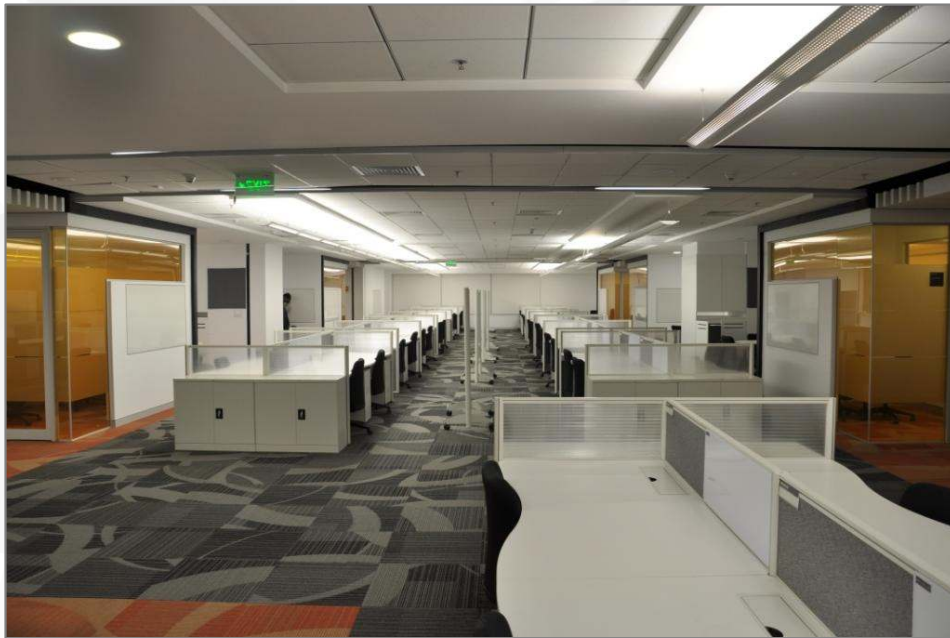














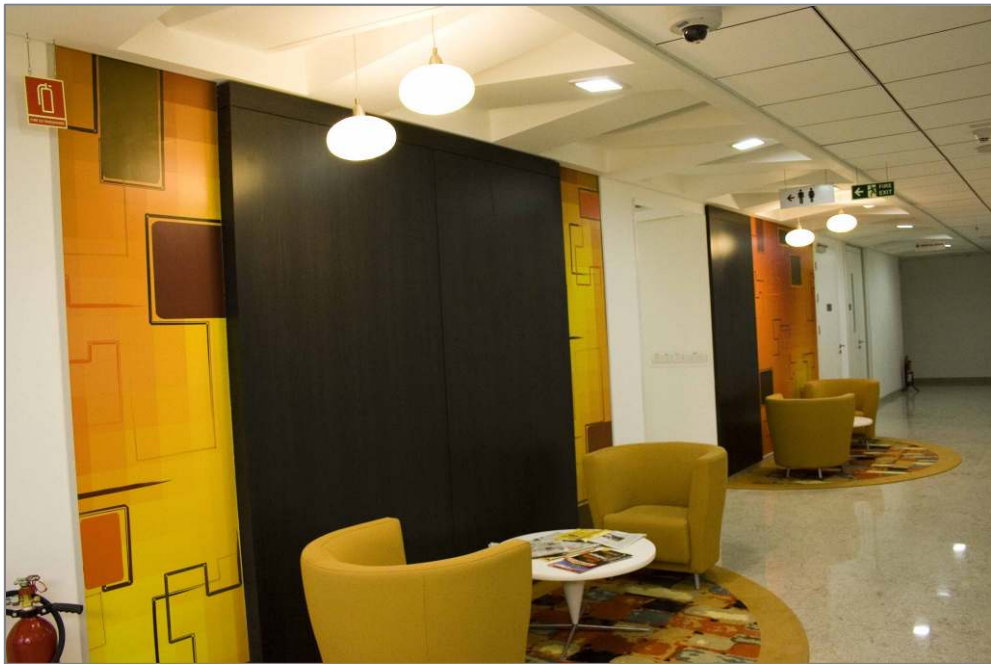
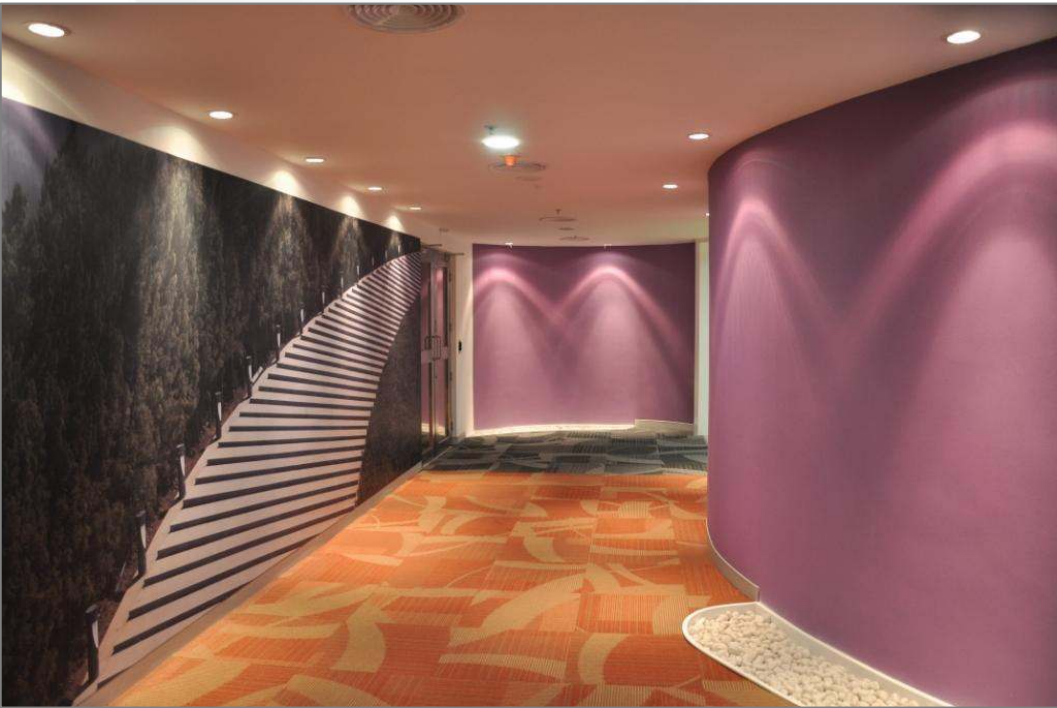














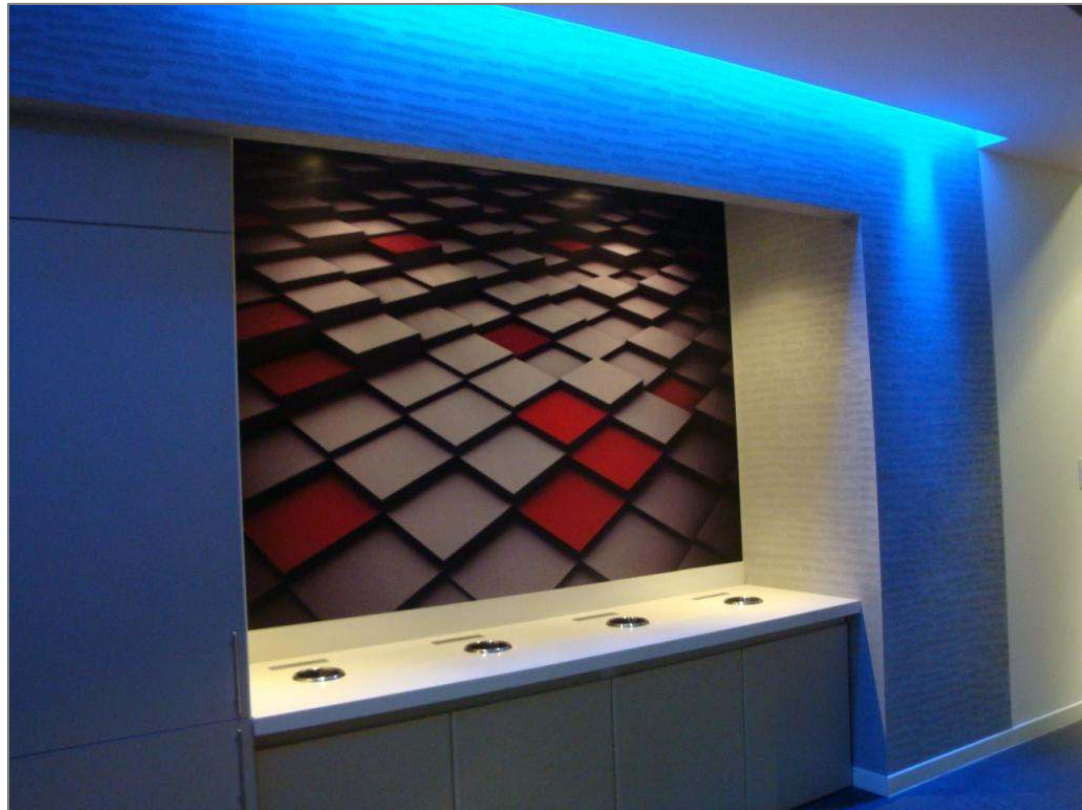












Contact Details

Contact Person: Ms Suma Khandige

Address:

583, "Pushpagiri",
Ground Floor Unit 1,
4th E Main, 10th D Cross,
W.O.C. Road 2nd Stage,
Mahalakshmpuram,
Bangalore - 560 086

Phone: 080 2349 3697

Email: suma@lightvista.co.in

Website: www.lightvista.co.in

